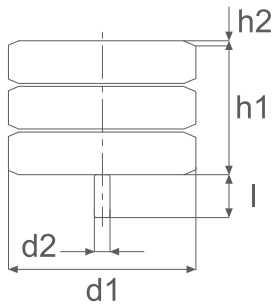


Artikel-Nr.	W _{max} ¹⁾ (J)	F ¹⁾ (kN)	f ¹⁾ (mm)	Gewicht (kg)	d ₁ (mm)	h ₁ (mm)	d ₂ (mm)	I (mm)
ZB-070x070	330	30	52	0,25	70	70	M12	35
ZB-080x040	200		30	0,20		40		
ZB-080x080	400	40	60	0,30	80	80	M12	35
ZB-080x120	600		90	0,40		120		
ZB-100x050	400		38	0,30		50		
ZB-100x100	800	63	75	0,50	100	100	M12	35
ZB-100x150	1200		112	0,70		150		
ZB-125x063	750		47	0,50		63		
ZB-125x125	1500	100	94	0,90	125	125	M12	35
ZB-125x190	2200		142	1,30		190		
ZB-160x080	1600		60	0,95		80		
ZB-160x160	3200	160	120	1,80	160	160	M12	35
ZB-160x240	4800		180	2,65		240		
ZB-200x100	3150		75	1,75		100		
ZB-200x200	6300	250	150	3,40	200	200	M12	35
ZB-200x300	9450		225	5,00		300		
ZB-250x125	6000		94	5,40		125		
ZB-250x250	12000	400	188	8,50	250	250	M24	80
ZB-250x375	18000		280	11,50		375		

(1J = 1Nm = 0,102mkp)

Zellkörper-Werkstoff: zelliges Polyurethan-Elastomer (0,53g/cm³)



Artikel-Nr.	Wmax ¹⁾ (J)	F ¹⁾ (kN)	f ¹⁾ (mm)	Gewicht (kg)	d ₁ (mm)	h ₁ (mm)	d ₂ (mm)	I (mm)
ZB-315x160	12000		120	8,50		160		
ZB-315x315	24000	630	236	14,65	315	315	M24	80
ZB-315x475	36000		356	20,80		475		
ZB-400x200	24000		150	16,50		200		
ZB-400x400	48000	1000	300	29,00	400	400	M30	80
ZB-400x600	72000		450	41,50		600		

(1J = 1Nm = 0,102mkp)

Zellkörper-Werkstoff: zelliges Polyurethan-Elastomer (0,53g/cm³)